



**Electrolux**  
PROFESSIONAL

## Stainless Steel Preparation 475x922 mm Aluminum Corner Unit

ITEM # \_\_\_\_\_

MODEL # \_\_\_\_\_

NAME # \_\_\_\_\_

SIS # \_\_\_\_\_

AIA # \_\_\_\_\_



137072 (CLS918)

Corner Shelving Set with  
aluminium side uprights and  
4 polyethylene louvered  
shelves, 475x922 mm

### Short Form Specification

Item No. \_\_\_\_\_

For corner installation. 4-level shelving set with louvered sectional polyethylene shelves (depth=475mm). Aluminium (20 micron) side uprights (height=1700mm). Adjustable feet. To be combined with a linear shelving unit

### Main Features

- Complete shelving system allows rapid and easy fixing of the shelves to the uprights.
- GN 1/1, GN 1/2 and GN 1/3 can be inserted into the frame.

### Construction

- Uprights and shelf frames constructed entirely in anodized aluminium (20 micron).
- Shelves made by section of polyethylene tablets.
- Sectional polyethylene shelves are dishwasher safe.
- Corner shelving must be fixed to a linear shelf (either 375mm or 475mm in depth) with the included bar clamps and can be positioned anywhere along the length of the linear shelf.
- 4 tiers and 4 corner clamps.

### Optional Accessories

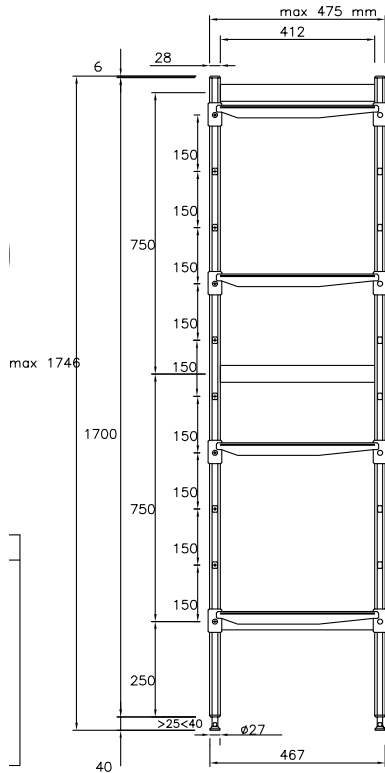
- Polyethylene shelf with aluminium frame, 475x886mm PNC 850063
- Angle joint for shelves (depth=475mm) PNC 850071
- 2 swivelling wheels, 100mm PNC 850072
- 2 swivelling wheels with brakes, 100mm PNC 850073

APPROVAL: \_\_\_\_\_



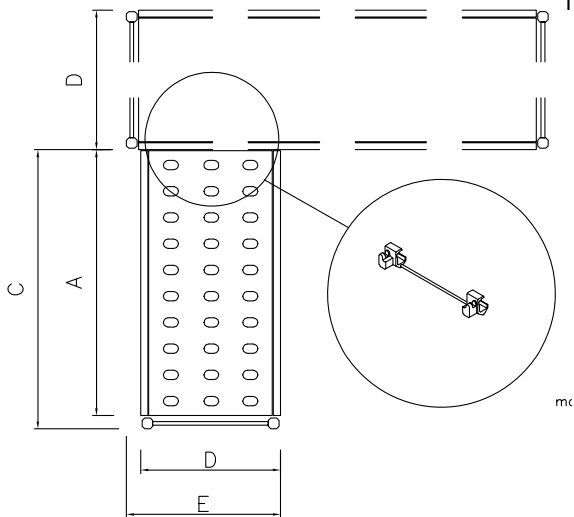
Experience the Excellence  
[www.electroluxprofessional.com](http://www.electroluxprofessional.com)

Front


**Key Information:**

<b>External dimensions, Width:</b>	
<b>137072 (CLS918)</b>	922 mm
<b>External dimensions, Depth:</b>	474 mm
<b>External dimensions, Height:</b>	1700 mm
<b>Max loading weight:</b>	880 kg
<b>Net weight:</b>	17 kg
<b>Uprights</b>	1

Top



Other

	A mm	C mm	D mm	E mm
137070	708	744	475	509
137071	798	834	475	509
137072	886	922	475	509
137073	974	1010	475	509
137074	1062	1098	475	509
137075	1152	1188	475	509
137076	1240	1276	475	509
137077	1330	1366	475	509
137078	1505	1541	475	509